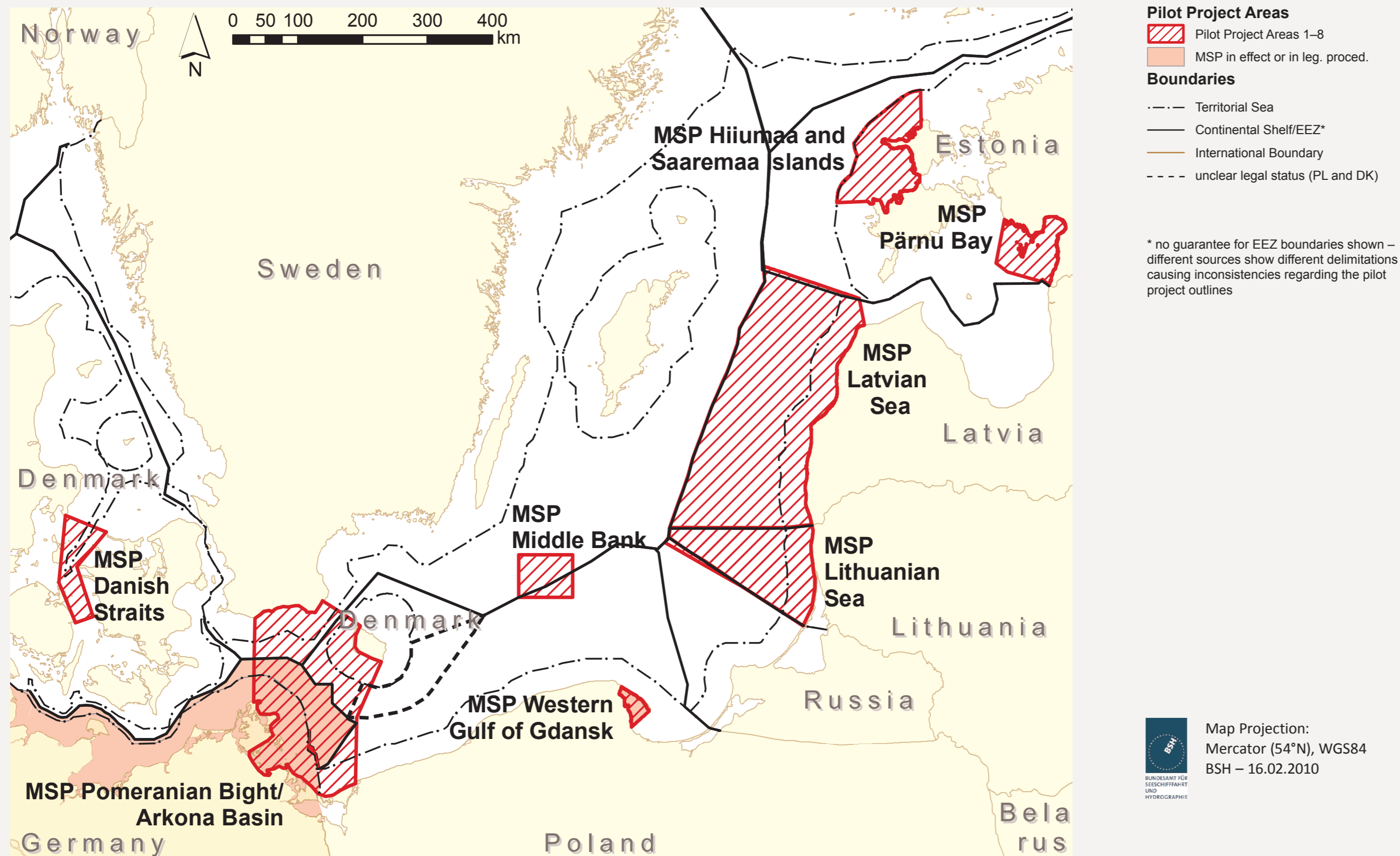


The BaltSeaPlan project with a budget of 3,7 million € accompanies the EU Maritime Policy by supporting the introduction of Integrated Maritime Spatial Planning in the Baltic Sea as well as providing recommendations for the development of National Maritime Strategies in the BSR countries.



## Demonstrating Maritime Spatial Planning in Practice

Within the BaltSeaPlan project draft Maritime Spatial Plans are being developed for the following eight pilot areas:



## Developing a common Spatial Vision for the Baltic Sea

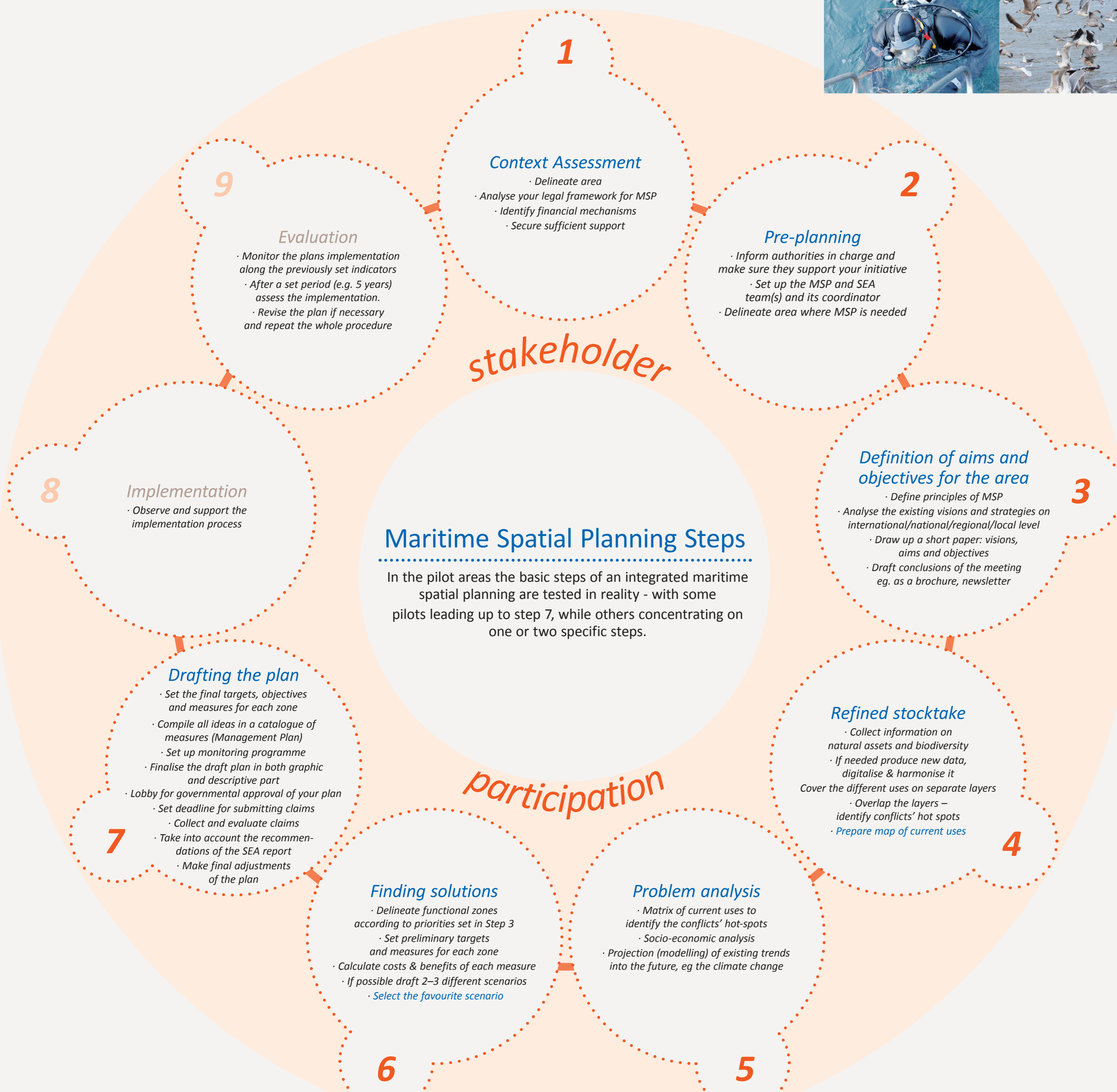
All BaltSeaPlan partners aim towards developing national visions and goals for using and developing the Baltic Sea space. Based on these national papers, a recommendation for a BSR wide vision is jointly prepared.

To achieve this aim, the BaltSeaPlan partners:

- prepare draft national visions for using the Baltic Sea space based on the assessment of national frameworks, methodologies and sectoral strategies influencing the sea space use (e.g. energy, fishery, transport, tourism, as well as nature conservation)
- exploit the visions to foster a national cross-sectoral debate and discuss goals and targets for using the space and filling in gaps in national sectoral policies and strategies
- develop jointly a BSR wide vision based on the national visions and taking into account transnational interdependencies and cumulative impacts
- initiate a BSR wide campaign as to discuss the BSR wide vision developed by the BaltSeaPlan partners

## Improving the joint information base

The BaltSeaPlan partners do not only exchange their data according to the EU INSPIRE directive and develop a joint database for the Baltic Sea and the pilot areas on sea uses and natural environment, taking into account existing plans and legislative framework. They are also in constant dialogue with each other in order to improve the understanding between the questions and needs of spatial planners and possible answers to be provided by scientists. Furthermore the project aims to look for solutions as to better integrate ecological data with socio-economic data sets.



## Project Partners

- Germany**
- Federal Maritime and Hydrographic Agency (BSH), *Lead Partner*
  - Ministry of Transport, Building and Regional Development of Mecklenburg-Vorpommern
  - WWF Germany, Baltic Sea Unit

- Poland**
- Maritime Office in Szczecin
  - Maritime Office in Gdynia
  - Maritime Institute in Gdańsk

- Denmark**
- National Environmental Research Institute (NERI) of Aarhus University

- Sweden**
- Royal Institute of Technology (KTH)
  - Swedish Environmental Protection Agency

- Estonia**
- Estonian Marine Institute of University of Tartu
  - Baltic Environmental Forum Estonia

- Lithuania**
- Klaipėda University Coastal Research and Planning Institute (CORPI)
  - Baltic Environmental Forum Lithuania

- Latvia**
- Baltic Environmental Forum Latvia

[www.baltseaplan.eu](http://www.baltseaplan.eu)